



The S-Charge System is a user friendly, powerful internal battery system, with an OLED display and a magnetic charger which can all be installed into a prosthesis. This allows the user to easily activate, deactivate, and charge their prosthesis while confidently monitoring the power status during the day.

The S-Charge 3500S System can be easily installed into a variety of limb builds, including the Steeper Espire™ Classic Plus Elbow. The system enables the use of powered devices such as electronic elbows, powered wrist rotators, multi-articulating hands, and terminal devices such as the Myo Kinisi myoelectric hand.

Key Features and Benefits

- High capacity 3500mAh battery system
- Low profile battery pack which can be easily fitted within the user's prosthesis
- Easy-release magnetic charger which fully charges the device within 5 hours
- Automatic Sleep Mode activation for power saving during the day
- Flexible configuration as the hub can be placed anywhere in the forearm
- OLED display shows real-time battery life icons
- Simple one-button operation to activate the device

The 3500S Battery Pack

The 3500S battery pack has been specifically designed for the S-Charge System, and can be easily mounted within an adult forearm. The 3500S batteries have an increased capacity of 3500mAh, providing the user up to four days of power dependant on usage.



The Hub

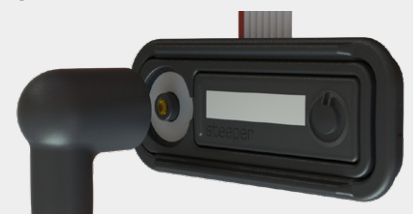
The hub is the central component of the S-Charge System with both the display and the batteries connecting to it.

The hub also contains the battery charge circuit, and similarly to the battery pack, the hub can be configured to fit in any position within the prosthesis, enabling the whole system to be installed easily and discreetly.

The Display

With real-time battery life icons, the digital display provides increased feedback to the user, enabling them to monitor their power usage and be alerted when the battery power drops below 10%.

Sitting within a raised mounting frame, the display is protected from accidental activation and being caught on clothes or accessories.



Technical Information

3500S Battery Pack

Dimensions (not inc cables)	67 x 40 x 22mm
Total Weight	106g
Capacity	3500mAh
Voltage	Nominal 7.2V
Current	2.5A peak current

The Hub

Length	58mm
Width	20mm
Thickness	10mm

The Display & Mounting Frame

Size	50 x 20 x 7mm
------	---------------

Compatibility

The S-Charge System is compatible with all powered upper limb systems with an equivalent power rating.

Please contact your local service centre to confirm compatible prosthetic hand systems.

Please note: The S-Charge System is only compatible with Steeper 3500S battery pack.

S-Charge System Ordering Information

Complete S-Charge System Part Number	SC3500
Includes: <ul style="list-style-type: none">• 3500S battery pack with lamination dummy• Display• Hub• Magnetic wall charger with UK, US, EU, and AUS mains adapters• Power connector cable• EQD connector cable• 3 x Lamination dummies, mounting frames and foam gaskets• 2 x Alignment stickers	

Spare Parts	Part Number
3500S Battery Pack	SCBP3500
S-Charge Hub Kit Hub, power connector cable, EQD connector cable	SCHUB
S-Charge Display Kit Display, mounting frames (3), mounting frame gaskets (3) and alignment stickers (2)	SCDIS
S-Charge Wall Charger Wall charger including mains adapters (UK, US, EU, AUS)	SWC2200
S-Charge Dummy Kit 3500S battery lamination dummy (1 pair), hub dummy, display dummy, alignment stickers (2)	SCDKIT
S-Charge Mounting Frame Kit Mounting frames (3), mounting frame gaskets (3), alignment stickers (2)	SCMFKIT
S-Charge 3500S Battery Pack Lamination Kit	SCLAM
Extended EQD Connector Cable (500mm)	B33736

For more information on the S-Charge System or to place an order, please contact sales@steeperusa.com or call (+1) 210 481 4126.